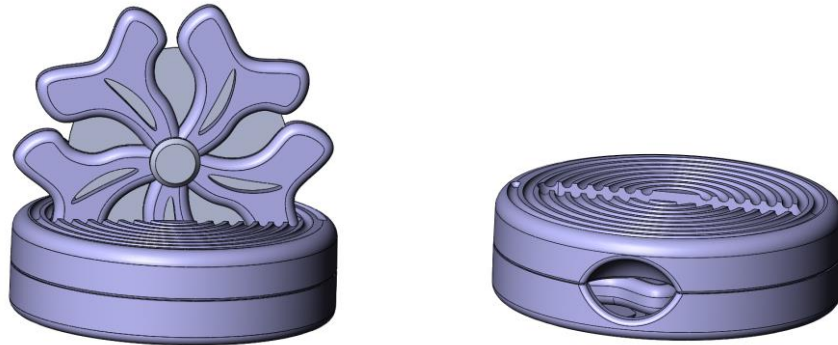
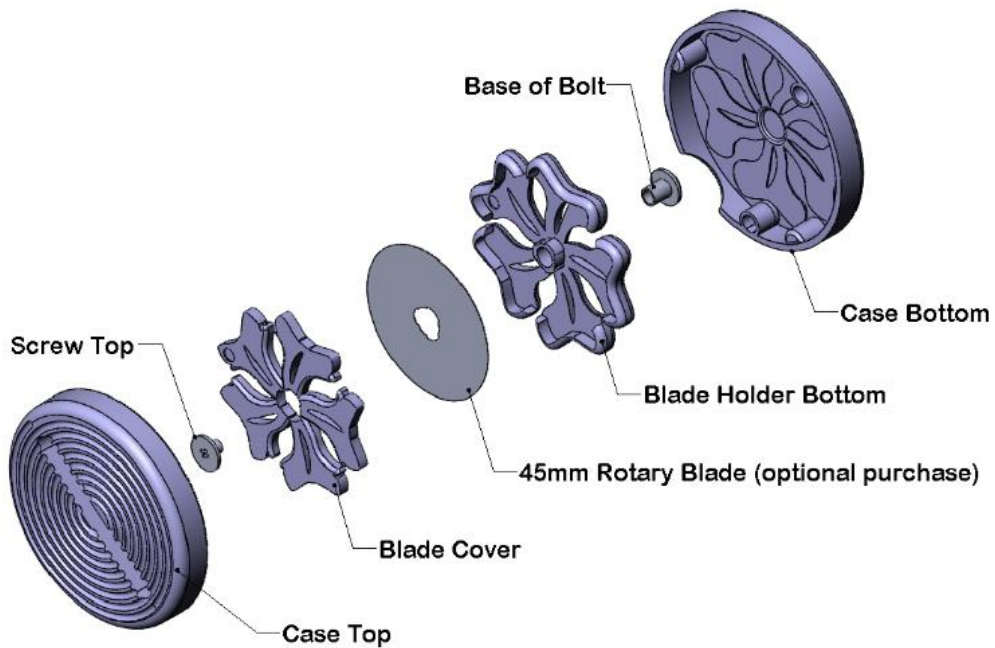


# BladeSaver Thread Cutter Assembly Instructions



Below is a diagram showing all the parts of the **BladeSaver and Case**:

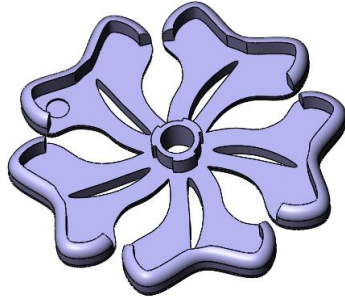


You will need the following before you begin assembly:

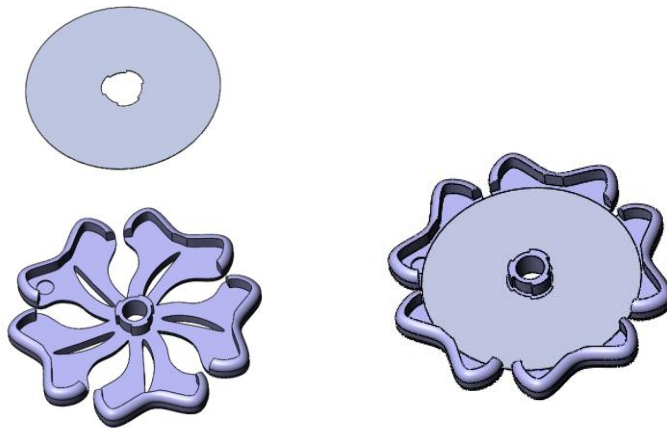
- #2 Phillips head screwdriver
- Used 45mm rotary blade

## To assemble the **Blade Holder**:

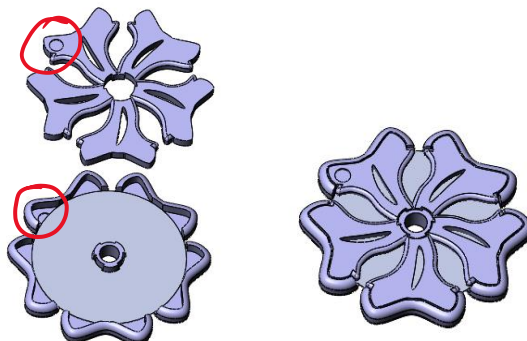
1. Put the **blade holder bottom** on a flat surface.



2. Carefully place a used 45mm rotary blade into the **blade holder**, positioning it so the cutouts in the blade align with the cutouts in the center of the **blade holder**.



3. Next place the **blade cover** on top of the blade. Note that there is a small half circle cut out of one of the petals of the **blade holder bottom** and a small half circle cut out of the blade cover. Align the two halves of the circle and your cover will fit perfectly.



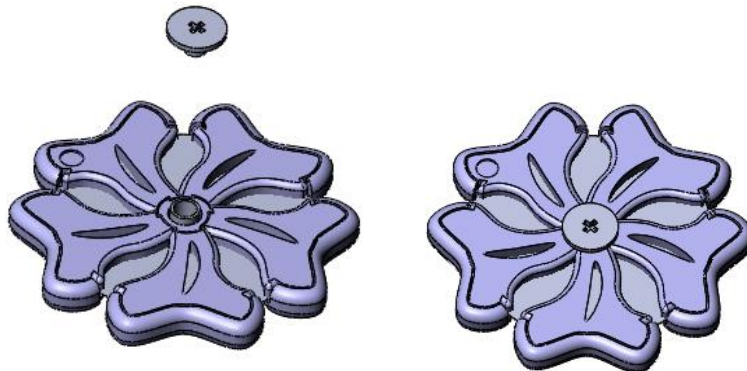
- Next locate the **base of the bolt** (this piece doesn't have a screw hole in it).



- Insert the **base of the bolt** into the hole in the center of the **blade holder bottom** as shown below:



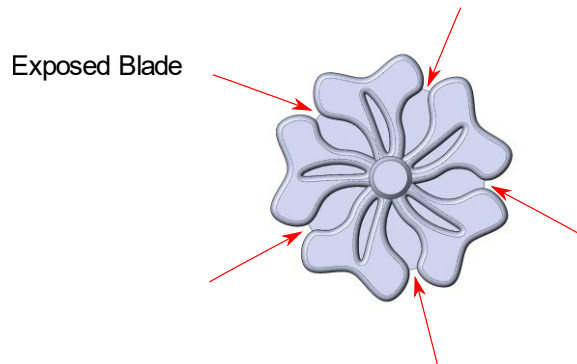
- Carefully hold this assembly in one hand and insert the screw into the base of the bolt. Use a Phillips screwdriver to tighten the screw. I find that if I place my left thumb on the base of the bolt while turning the screwdriver with my right hand I can keep the bolt from spinning. You only have to turn the screw until it is no longer loose—it will start to spin on your thumb as you turn the screwdriver indicating that it is tight enough.



## Using the BladeSaver Thread Cutter

To use the **BladeSaver**:

1. Remove the **BladeSaver** from its case. Note that there are 5 places that the rotary cutter blade is exposed so you have 5 places to cut your thread:



A tip from Carol at The Granary in Sunnyvale, CA: if you take the blade holder case apart and rotate the blade over one notch you get an additional 5 places on the blade to cut. You can do this twice, so you have a total of 15 places on the blade that you can use for maximum blade usage!

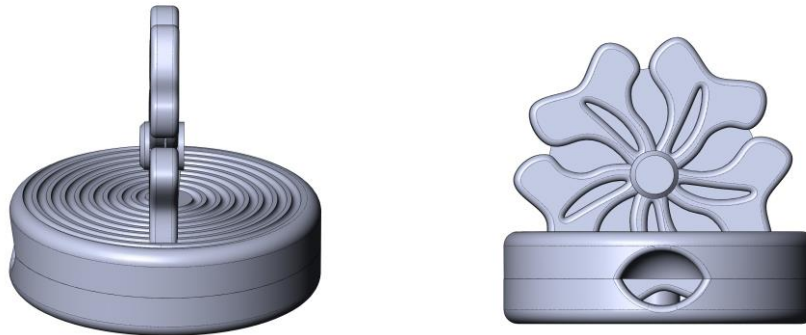
2. Put the **Case Top** back onto the **Case Bottom** and position it with the slot pointing towards you as shown below



3. Hold the **BladeSaver** over the slot and turn it so one of the petals of the flower is parallel to the slot.



4. Press the **BladeSaver** into the slot on the case until it hits the bottom of the case. It will be a tight fit so it stays put while you use it. Note: make sure that you position one of the exposed areas of the blade straight up for easiest use (see photo to the right below).



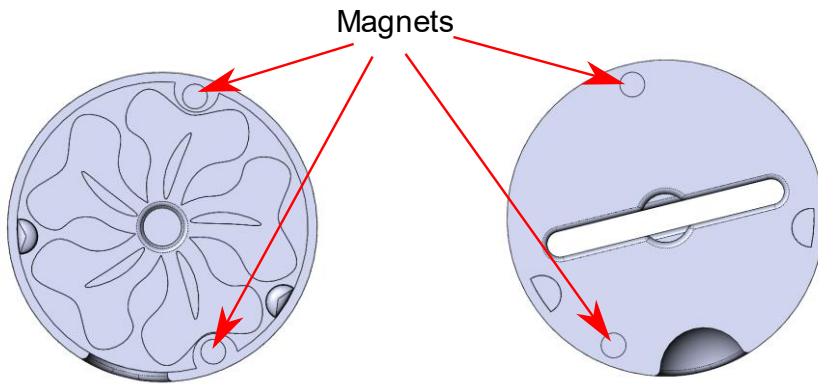
5. You are now ready to cut apart your chain pieced blocks. You can also use it to trim any long threads from the edges of your blocks.

To close the **BladeSaver**:

1. When you are ready to pack up your **BladeSaver**, place one hand on the **BladeSaver Case** to hold it in place and carefully pull up on the **BladeSaver** to remove it from the top of the case.
2. Open the case, and note that there is a picture of the **BladeSaver** flower inside. This is to help you line up your **BladeSaver** so it fits perfectly in its case.



3. The case has 4 magnets in it to keep it securely closed while traveling to class (the magnets also help keep the case closed during use).



4. Also note that there are thumb holes in the top and bottom of the case. They make it easier to open the case, and they also make it easier to see how to align the case so the magnets and tabs snap into place.



If you have any questions or suggestions for improvement, please email [Heather@PurpleHobbies.com](mailto:Heather@PurpleHobbies.com)